



HOUSEI Smart Home Build System and Products

www.housei.io

HOUSEI has its own manufacturing for the following:



- Structural Insulated Panels (oSIPs, cSIPs, mSIPs) (4.5-12.25", 4X8'-8X24')



- Light Gauge Steel Frames (C90, C140, 2" Truss)



- Wooden Truss (4M in height)



- Glulam (up to 200mm in width, 12M in length)



- Windows (Thermal Brake Aluminum & N.American PVC)



- Stone Coated Metal Tile



- Solar Tile (Serial A, B, C.)



- Standard Structural Insulated Panels (oSIPs, cSIPs, mSIPs)
- Light Gauge Steel Frames (C90,C140, 2" Truss, flat pack)-LGS-FP
- HOUSEI RTA SIPs House Kit Panelized (open panels) ---RTA-SIP-O
- HOUSEI RTA SIPs house Kit Whole wall Panelized (closed Panels)—RTA-SIP-C
- HOUSEI SIPs Modular House (3D boxes) RTA-SIP-Mod
- HOUSEI RTA LGS House Kit (open panel) RTA-LGS-O
- HOUSEI RTA LGS House Kit (closed panel) RTA-LGS-C
- HOUSEI LGS Modular House(3D boxed) RTA-LGS-M
- HOUSEI Hybrid House Kit (mixed of Steel, timber etc, panelized or .) RTA-HYB
- HOUSEI Glulam House kit (precut) RTA-GLU
- HOUSEI Bathroom Pod



HOUSEI Bathroom Pod

HOUSEI House DIY Kit can be used for

H

- Residential Villa
- Low rise Apartment house (up to 6 floors, self supporting)
- Tiny House
- Mobile House
- Resort House
- ADU&Granny Flat
- Bathroom Pod
- Small-medium commercial building
- Small-medium warehouse (2000 s.m. or less.)



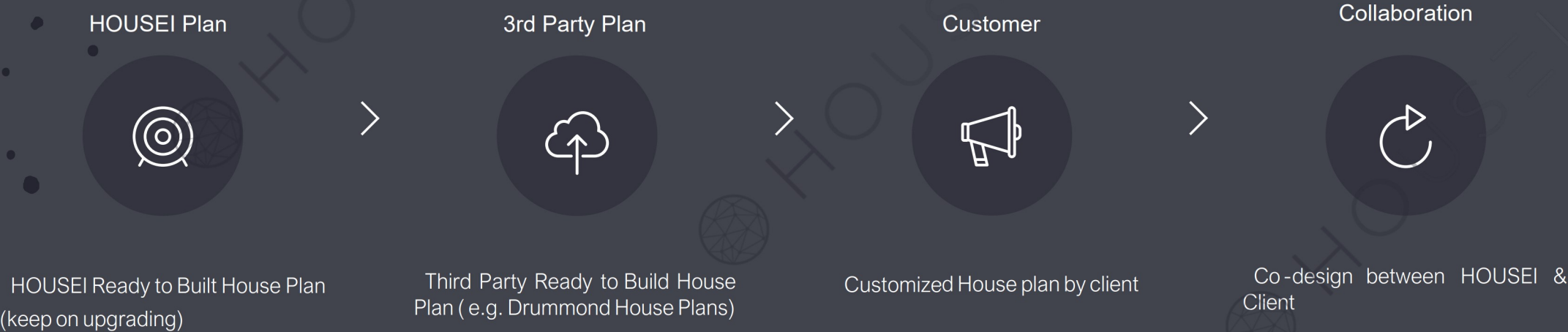
PRESENTATION HOUSEI

DIY KITS

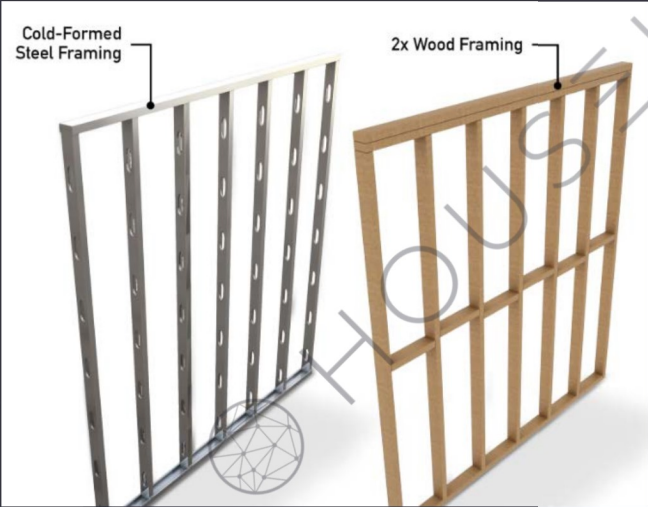
The designing/engineering ability of HOUSEI in house

- Architect (for house plan) , using software: Sketchup, Chief Architect , AutoCAD, Revit
- Structural Engineer/detailer, using software: HSB CAD, PKPM, 3D3S, SAP 2000, AutoCAD, Scottsdale Steel Design

HOUSEI Plan Flexibility



Open Panel vs Closed Panel H



Precut SIPs



(most can be seen)

Important: if by HQ container, wall height 2.55m for SIPs, net ceiling can be 76mm more.

Some hided. With windows always

Prefab: Panelized VS Modular



01

Easier Shipment



02

Higher prefab rate

HOUSEI- HouseBy2

H

- A new concept by HOUSEI
- Help to solve the problem” no house to live”“ too expensive/slow/difficult to build”
- Use the latest Industrialized housing technology, can build house by only 2 people (like a couple) by hand Super easy/ fast/energy saving/green/low cost.



How HouseBy2 Works?

- Ready to assemble Precut SIPs (Structural Insulated Panels) : fast, super insulation, easy, light.
- SIPs box—SIPs ceiling, SIPs roof/LGS roof (standard manufacturing ; much easier to work with onsite; straight to be finished)
- Truss roof add on (flexible)
- Less than 80kg for each parts (Can be carried by two person)
- Optimized house plan (prefer small but any plan works)
- Full installation guide, demo instructions, demo house built video, Sips layout
- 3D support

Benefit of HouseBy2

H

- Greatly save manufacturing cost/time/effort,
- Only need two person to build their own house feasible.
- Less than 80kg for each parts (Can be carried by two person)
- Provide upgrade options by buyer for color, finish
- The house are warm, green, energy sufficient, with option to add solar tiles and home enegery storage powerwall made it fully smart home

Example:

40 square meter House, 2 person, 1-2 days for the shell framing, 5 days for Exterior work, 10 days for interior work ,completed constructed house in just 15 days (if 4 person, Time reduced to half to 8 days)

Components Break down

Roofing: Stand Seam Steel/Stone coated Metal/Ashphalt/solar tile

Siding: Vertical Fiber cement/Vinyl/Wood Wiring: No wire chase (Surface running)

Plumbing: reserve the space.

Interior: ceiling: wood; wall: drywall/fast installed panel

HouseBy2

SIPS wall+ceiling+seperate roof Add on

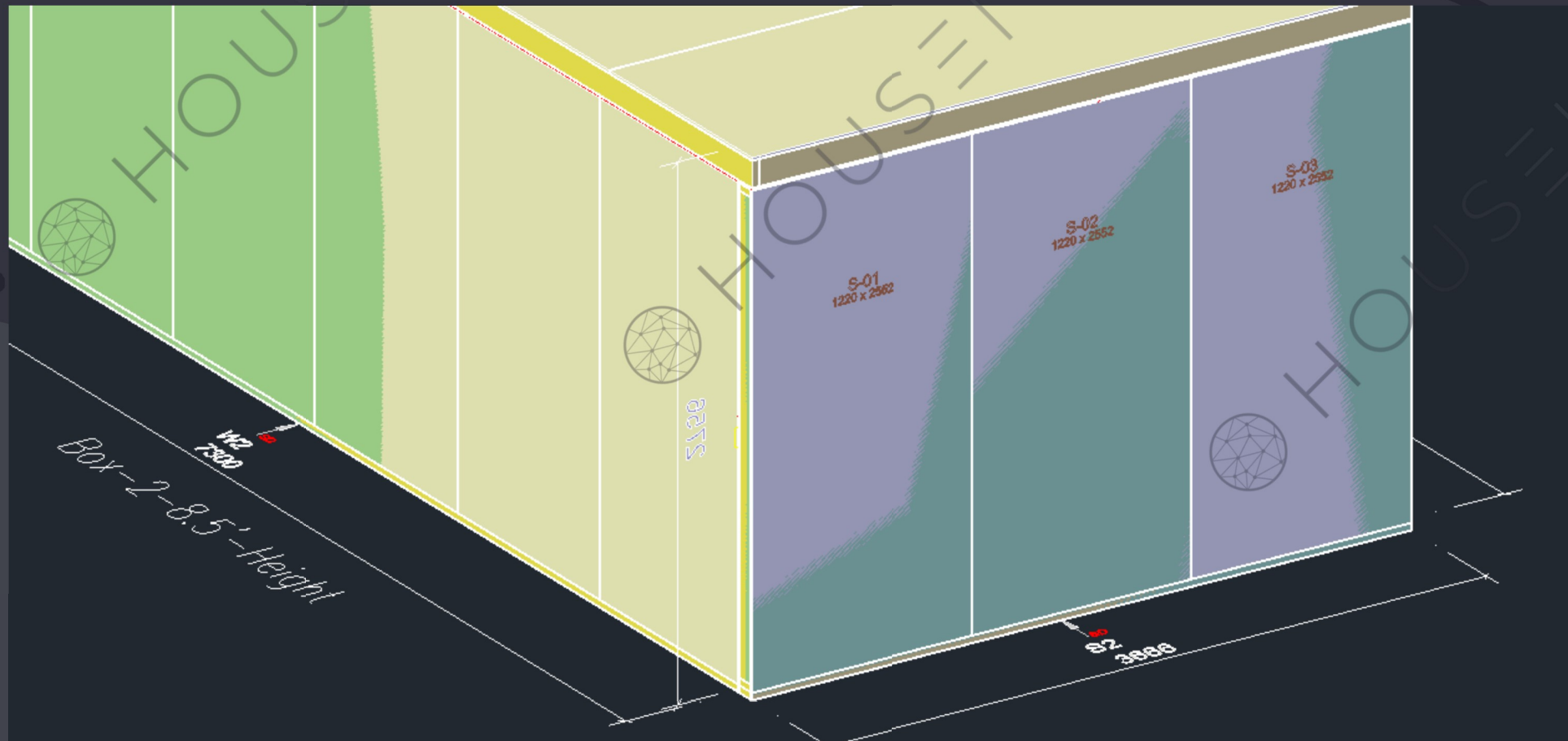
H



Bottom: SIPs box (save 30% or manufacturing difficulty, can be stocked; standard)

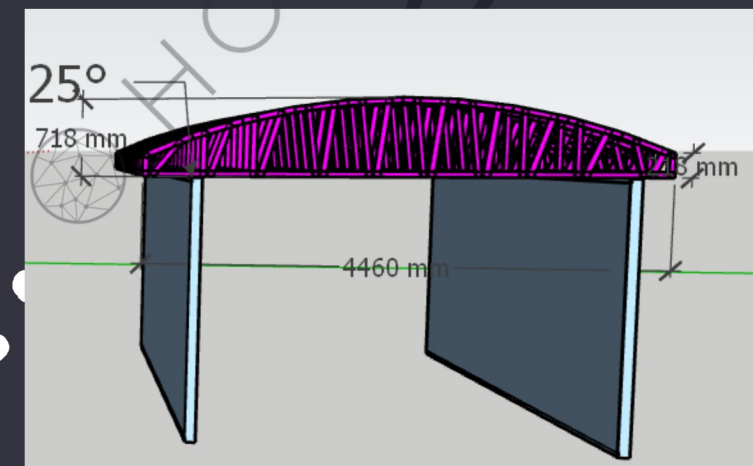
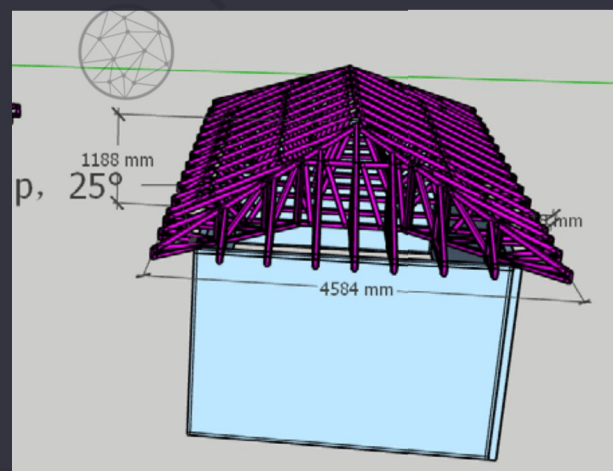
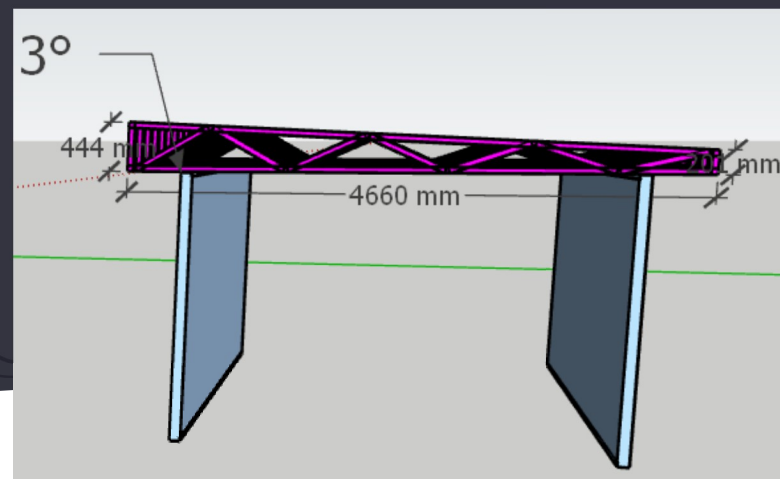
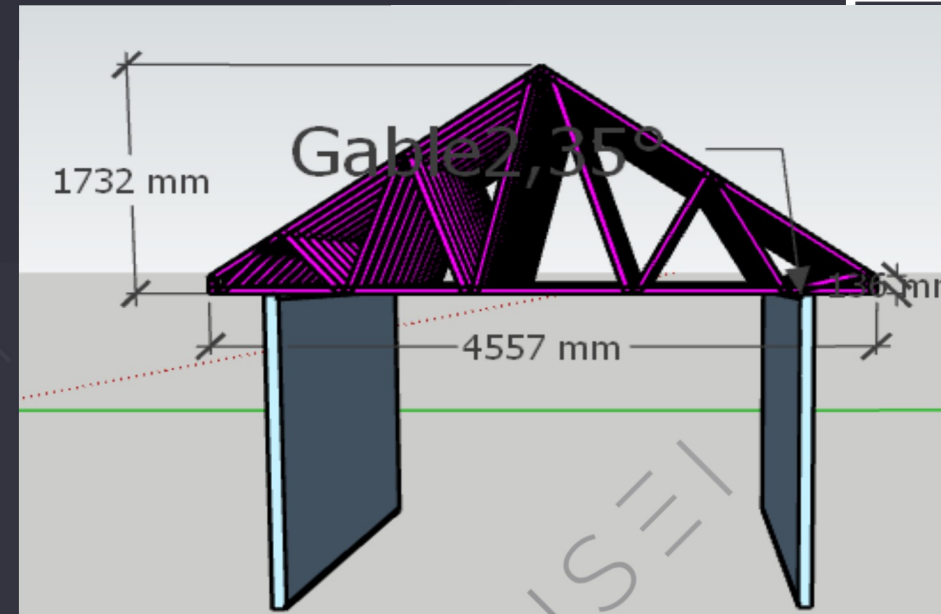
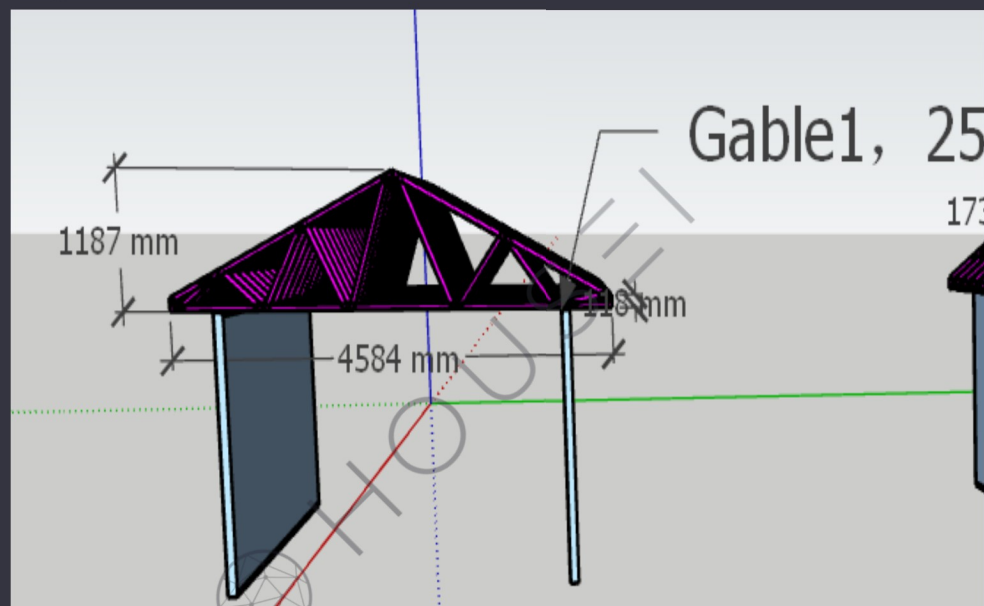
(much easier to be installed on site, have a working platform first, easy to be decorated)

H





Many options of L.G.Steel Truss roof possibility to be add on



HOUSEI - houseBy2 Sweden Serial

H



0304(18m²) 3.66X4.88(studio)

0307 (31m²) 3.66X8.54(1 bedroom)

0310(44m²) 3.66X10.22(2 bedroom)

You can build a cozy house within only 2 People